

PATRIOT – BMS

CoCr Bare-Metal Coronary Stent



INSIGHTRA[®]
MEDICAL



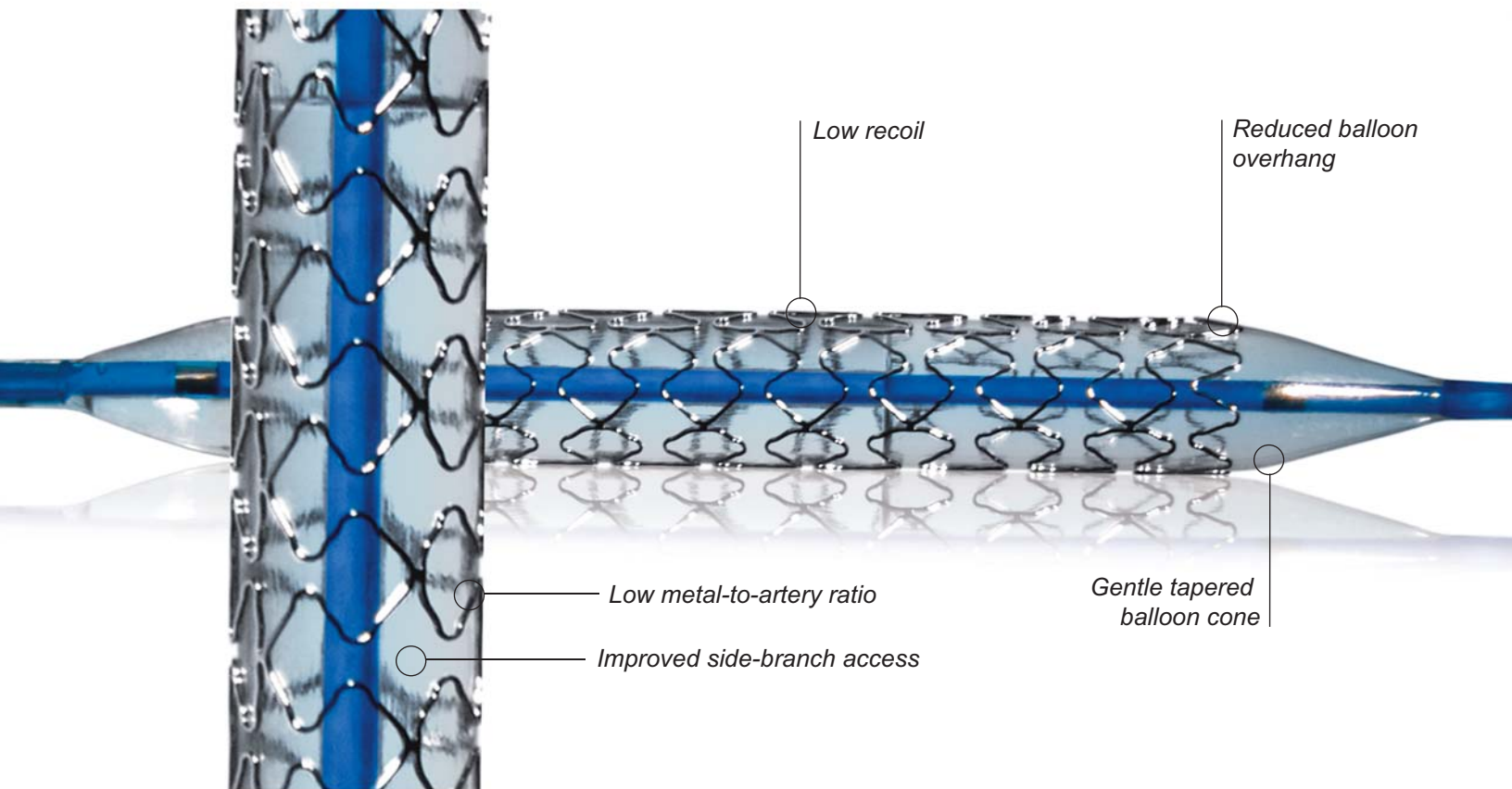
PATRIOT – BMS

CoCr Bare-Metal Coronary Stent

Exceptional quality in a breakthrough design

The new Insigntra advanced-generation cobalt-chromium (CoCr) bare-metal stent features an innovative, semi-open-cell design. It combines all the benefits of closed- and open-cell stents, while mitigating their disadvantages. Unique, thin-strut construction yields superior deliverability and a low metal-to-artery ratio. It is highly flexible – with low recoil – while retaining outstanding radial strength. The new-geometry, semi-open-cell design allows greater side-branch access through the stent. CoCr means low tissue reactivity and superb radiopacity. Mounted on our world-class rapid-exchange balloon, the integral hypotube

metal shaft allows excellent pushability. The mounted stent presents a small profile and provides exceptional vessel conformity. Available in a full range of sizes, this first-class stent delivers everything you need for excellent clinical outcomes.



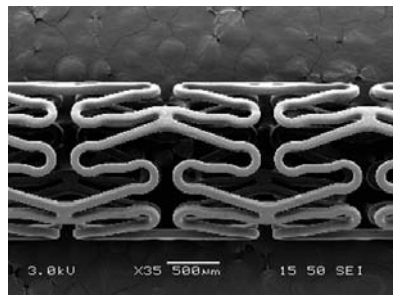
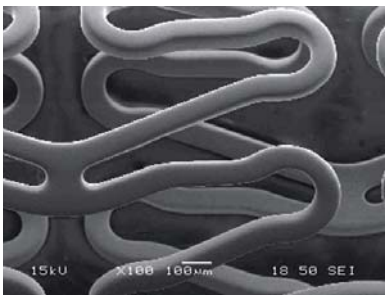
Unique semi-open-cell design delivers all the benefits of both open- and closed-cell stents. Improves side-branch access and flexibility.

Patriot SDS Size Availability Matrix

SIZE	SV				MV		
	2.00	2.25	2.50	2.75	3.00	3.5	4.0
9	Y	Y	Y	Y	N	N	N
12	Y	Y	Y	Y	Y	Y	Y
15	Y	Y	Y	Y	Y	Y	Y
20	Y	Y	Y	Y	Y	Y	Y
25	Y	Y	Y	Y	Y	Y	Y
30	N	N	N	N	Y	Y	Y
40	N	N	N	N	Y	Y	Y

Y = Available N = Not Available

- Unique semi-open cell
- Excellent deliverability
- Low metal-to-artery ratio
- Highly flexible
- Low tissue reactivity



High-quality MP35N cobalt-chromium alloy.
Thin-strut construction for excellent deliverability, flexibility, strength and low metal-to-artery ratio.
Proprietary 6X electropolish finishing to eliminate nickel leeching.

PATRIOT - BMS

Description	Inshitra Product code (Reference code on label)*
Inshitra Patriot SDS 2.00 x 9	PBMS -2.00X09
Inshitra Patriot SDS 2.00 x 12	PBMS -2.00X12
Inshitra Patriot SDS 2.00 x 15	PBMS -2.00X15
Inshitra Patriot SDS 2.00 x 20	PBMS -2.00X20
Inshitra Patriot SDS 2.00 x 25	PBMS -2.00X25
Inshitra Patriot SDS 2.25 x 9	PBMS -2.25X09
Inshitra Patriot SDS 2.25 x 12	PBMS -2.25X12
Inshitra Patriot SDS 2.25 x 15	PBMS -2.25X15
Inshitra Patriot SDS 2.25 x 20	PBMS -2.25X20
Inshitra Patriot SDS 2.25 x 25	PBMS -2.25X25
Inshitra Patriot SDS 2.50 x 9	PBMS -2.50X09
Inshitra Patriot SDS 2.50 x 12	PBMS -2.50X12
Inshitra Patriot SDS 2.50 x 15	PBMS -2.50X15
Inshitra Patriot SDS 2.50 x 20	PBMS -2.50X20
Inshitra Patriot SDS 2.50 x 25	PBMS -2.50X25
Inshitra Patriot SDS 2.75 x 9	PBMS -2.75X09
Inshitra Patriot SDS 2.75 x 12	PBMS -2.75X12
Inshitra Patriot SDS 2.75 x 15	PBMS -2.75X15
Inshitra Patriot SDS 2.75 x 20	PBMS -2.75X20
Inshitra Patriot SDS 2.75 x 25	PBMS -2.75X25
Inshitra Patriot SDS 3.00 x 12	PBMS -3.00X12
Inshitra Patriot SDS 3.00 x 15	PBMS -3.00X15
Inshitra Patriot SDS 3.00 x 20	PBMS -3.00X20
Inshitra Patriot SDS 3.00 x 25	PBMS -3.00X20
Inshitra Patriot SDS 3.00 x 30	PBMS -3.00X30
Inshitra Patriot SDS 3.00 x 40	PBMS -3.00X40
Inshitra Patriot SDS 3.50 x 12	PBMS -3.50X12
Inshitra Patriot SDS 3.50 x 15	PBMS -3.50X15
Inshitra Patriot SDS 3.50 x 20	PBMS -3.50X20
Inshitra Patriot SDS 3.50 x 25	PBMS -3.50X25
Inshitra Patriot SDS 3.50 x 30	PBMS -3.50X30
Inshitra Patriot SDS 3.50 x 40	PBMS -3.50X40
Inshitra Patriot SDS 4.00 x 12	PBMS -4.00X12
Inshitra Patriot SDS 4.00 x 15	PBMS -4.00X15
Inshitra Patriot SDS 4.00 x 20	PBMS -4.00X20
Inshitra Patriot SDS 4.00 x 25	PBMS -4.00X25
Inshitra Patriot SDS 4.00 x 30	PBMS -4.00X30
Inshitra Patriot SDS 4.00 x 40	PBMS -4.00X40



9200 Irvine Center Drive, Ste. 200
Irvine, CA 92618 USA • www.insightra.com

© 2011 Inshitra Medical Inc. USA, All trademarks are owned by their respective companies



Part number:
DO6-0001-001 Rev. B